

Angiodroid

The CO₂ Injector

Peripheral Interventional Angiography



Angiodroid Srl

Via Caselle, 76 - 40068
San Lazzaro di Savena
Bologna - Italy

Phone/Fax +39 051 463269
info@angiodroid.com
www.angiodroid.com

CE
1936

angioidroid

The CO₂ Contrast Media Injector

dedicated to

Interventional and Diagnostic
Angiographic Peripheral Procedures

3 main **Fields** of application

Interventional Radiology

Vascular Surgery

Interventional Cardiology

angioid

Carbon Dioxide (CO₂) is the only
Safe Contrast Agent for Patients with

Hyper sensibility to ICM (Iodine Contrast Material)

Renal Failures

Diabetic Diseases

CIN (Contrast Induced Nephropathy) Risk

engioandroid

is the only Device Worldwide

100% Digital

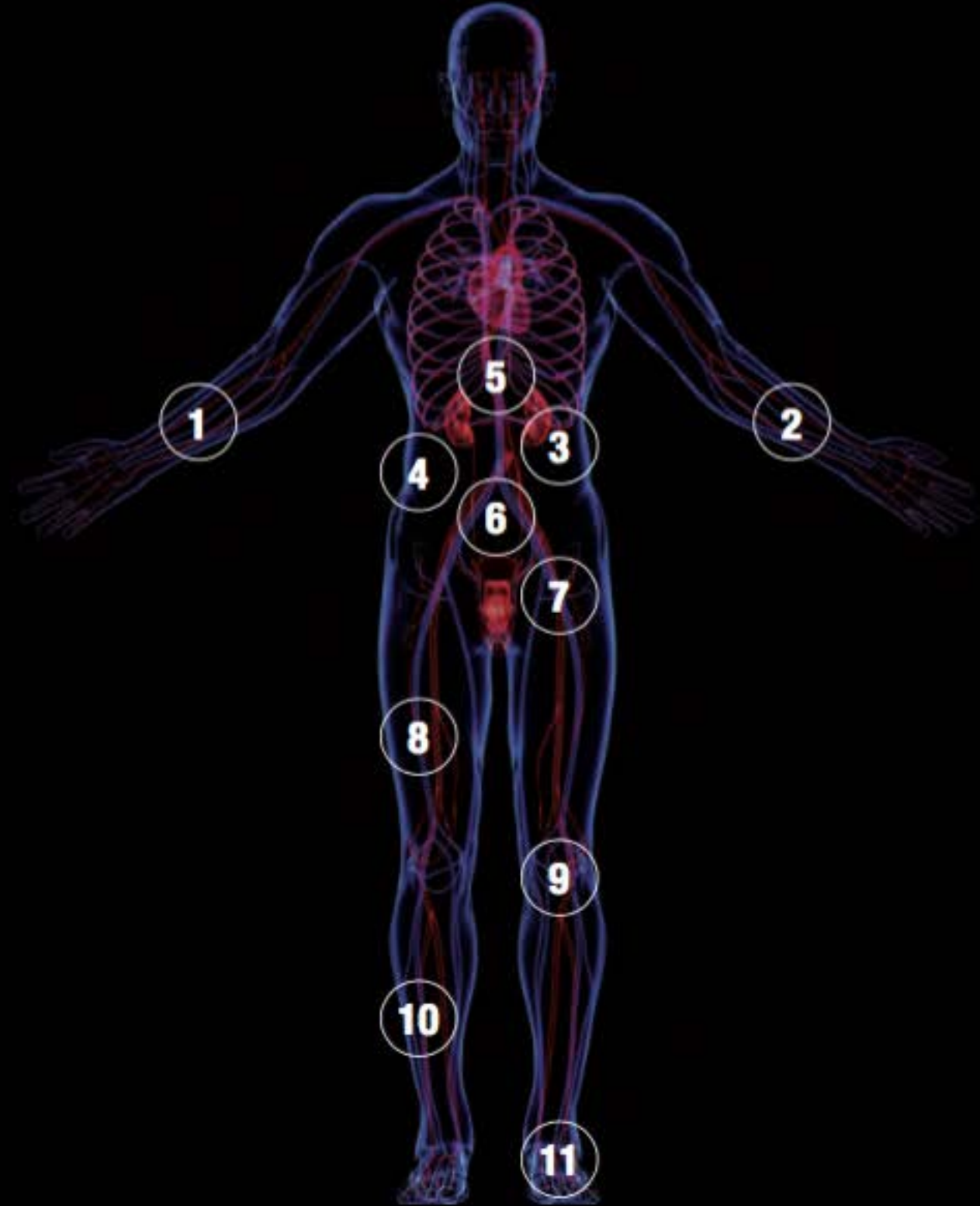
100% Automatic

100% Safe

100% User Friendly

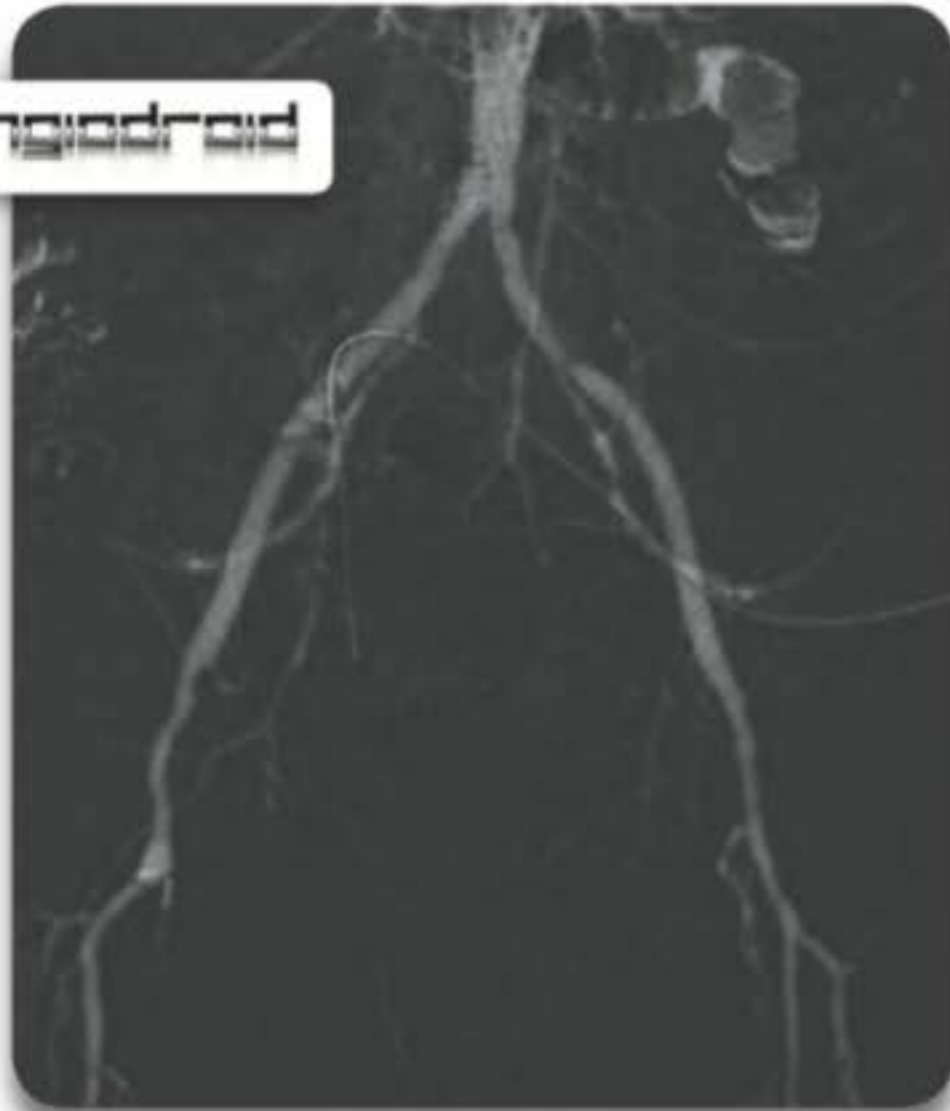
Investigable Districts

- ① Hemodialysis Access
- ② Venous system
- ③ Renal Arteries
- ④ Hepatic Arteries
- ⑤ Descending Aorta
- ⑥ Aortic Bifurcation
- ⑦ Iliac Arteries
- ⑧ Femoral Arteries
- ⑨ Popliteal Artery
- ⑩ Popliteal Trifurcation
- ⑪ Arteries of the Foot



Aortic Bifurcation Comparison

angioid



CO₂



IODINE

AngioDroid

Uniqueness

Large CO₂ Reserve



Set the Volume

Set the Pressure



Ready to Inject

Recall your Program



CO₂ Cylinder inside

angiodroid

The Revolutionary Approach



Traditional Approach

CO₂ **Vs** Iodine



Complementary Approach

CO₂ **&** Iodine

A new Complementary Approach is now possible thanks to the revolutionary technology developed by Angiodroid The CO₂ Injector. Physicians can deliver the most suitable contrast agent, depending on the clinical history of the patient and the investigated body district. The Complementary Approach can drastically reduce the dose of ICM, by injecting only 8 to 10 ml per procedure.