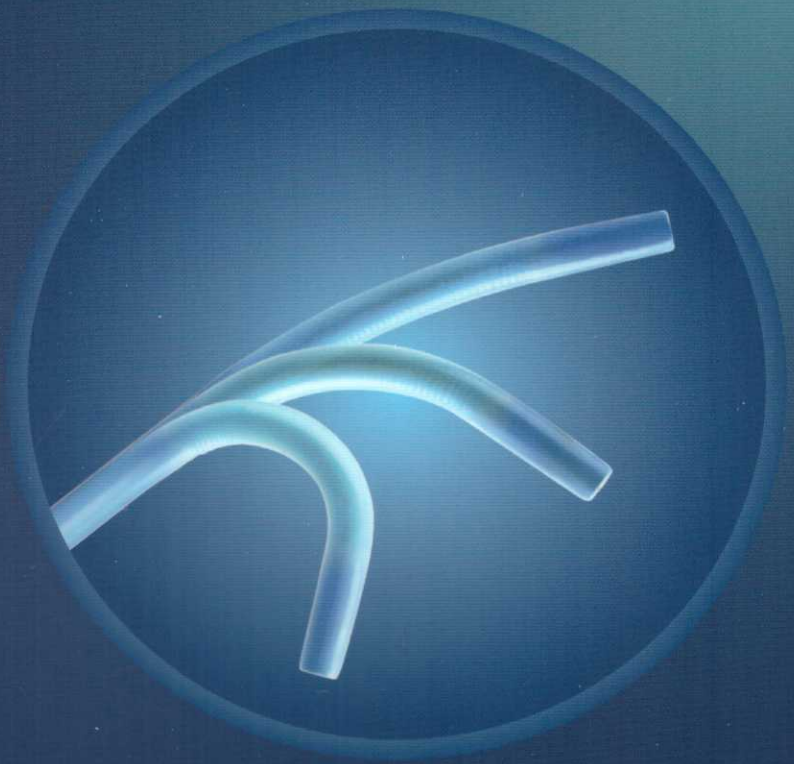


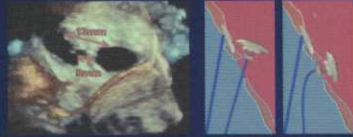
Fustar™
Steerable Introducer



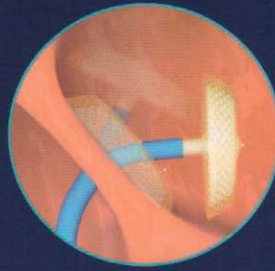
Navigate to Your Destination

Outstanding Design

Enable to position and place occluder precisely with deflectable 0-160°



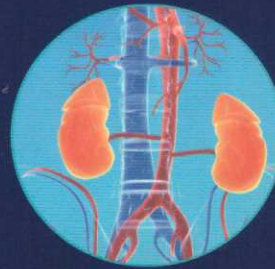
Double ASD



Structural and congenital heart disease

Multiple Potential Applications with Only One Sheath

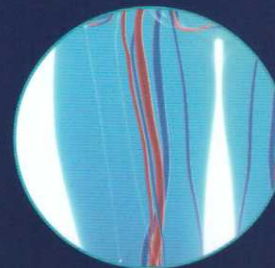
Apply to various interventional procedures



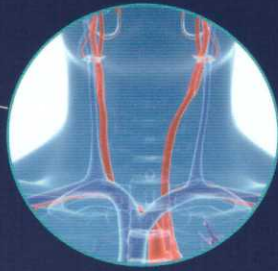
Abdominal aorta branch vessels

Safe and Ergonomic Design for Usage

Smooth transition between dilator and sheath can reduce vessel trauma
Quickly and easily access to target



Lower limb arteries



Heart proximal
branch vessels

Vessel Protection, Minimize Surgery Risk

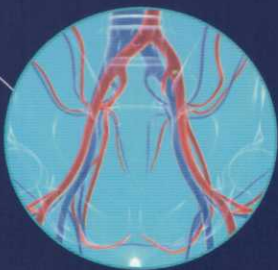
Reach target point with coaxial status and minimize risk of mural thrombosis or plaque abscission during advancement



Aortic artery stents

Fustar = Delivery Sheath + Guiding Catheter

Reduce surgery time by avoiding repetitive catheter sizing selection



Iliac artery crossover

Distal Silicon Valve Prevents Air Embolism and Minimizes Bleeding

ORDERING INFORMATION

Fustar-800

(Recommended for used with ASD&PFO Occluder)

Code		ID		OD	Effective Length	Deflectable Length	Deflectable Angle/°
		(mm)	(inch)	(mm)	(mm)	(mm)	
Type A	SVA5F-800	1.8	0.071	2.9	800	30	0~160
	SVA6F-800	2.1	0.083	3.2	800	30	
	SVA7F-800	2.5	0.098	3.5	800	30	
	SVA8F-800	2.8	0.110	3.9	800	30	
	SVA9F-800	3.1	0.122	4.1	800	30	
	SVA10F-800	3.5	0.138	4.5	800	30	
Type B	SVB12F-800	4.1	0.161	5.2	800	50	0~90
	SVB14F-800	4.8	0.189	5.9	800	50	

Fustar-550/700/900

(Recommended for used with Peripheral Case)

Code		ID		OD	Effective Length	Deflectable Length	Deflectable Angle/°
		(mm)	(inch)	(mm)	(mm)	(mm)	
SVA5F-550	1.9	0.075	2.8	550	30	0-160	
SVA6F-550	2.2	0.087	3.1	550	30	0-160	
SVA7F-550	2.5	0.098	3.4	550	30	0-160	
SVA8F-550	2.8	0.110	3.6	550	30	0-160	
SVA9F-550	3.1	0.122	4.0	550	30	0-160	
SVA10F-550	3.5	0.138	4.4	550	30	0-160	
SVA5F-700	1.9	0.075	2.8	700	30	0-160	
SVA6F-700	2.2	0.087	3.1	700	30	0-160	
SVA7F-700	2.5	0.098	3.4	700	30	0-160	
SVA8F-700	2.8	0.110	3.6	700	30	0-160	
SVA9F-700	3.1	0.122	4.0	700	30	0-160	
SVA10F-700	3.5	0.138	4.4	700	30	0-160	
SVA5F-900	1.9	0.075	2.8	900	30	0-160	
SVA6F-900	2.2	0.087	3.1	900	30	0-160	
SVA7F-900	2.5	0.098	3.4	900	30	0-160	
SVA8F-900	2.8	0.110	3.6	900	30	0-160	
SVA9F-900	3.1	0.122	4.0	900	30	0-160	
SVA10F-900	3.5	0.138	4.4	900	30	0-160	

LifeTech Scientific

Add: Cybio Electronic Building, Langshan 2 nd Street, North Area of High-tech Park,
Nanshan District, Shenzhen 518057, P. R. China
Tel: 86-755-86026250 Fax: 86-755-86026251
Web: www.lifetechmed.com

Version NO : 2015-EN-A-1.0